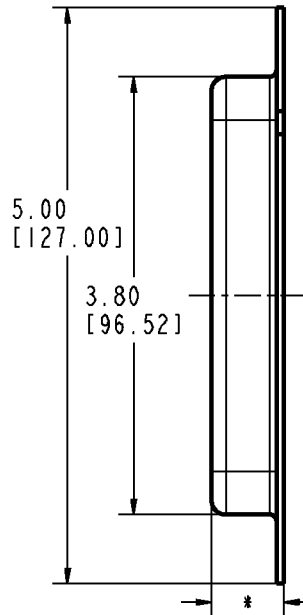
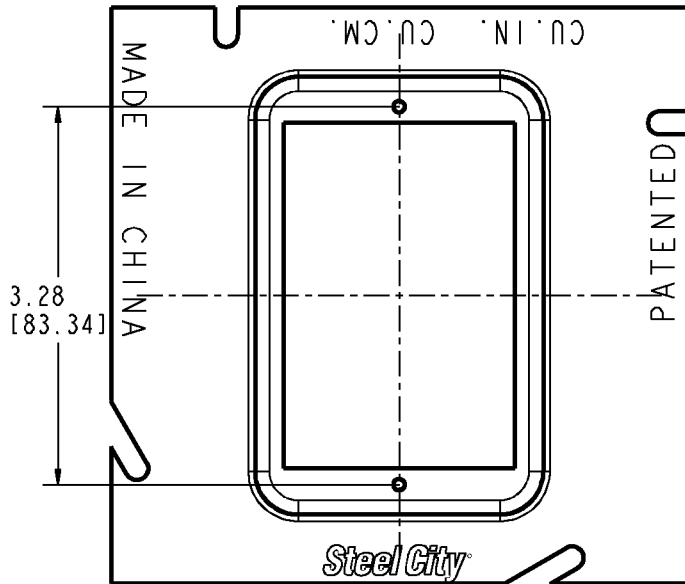
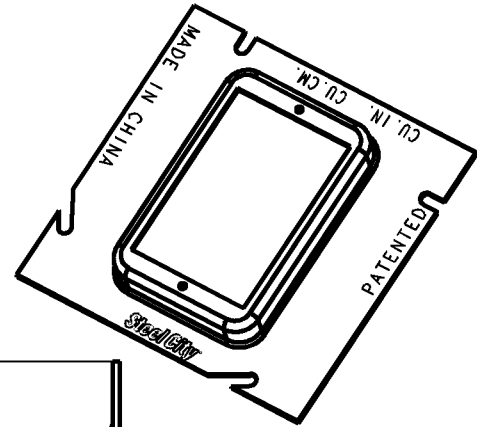
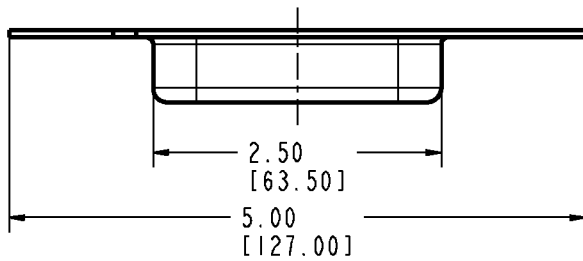
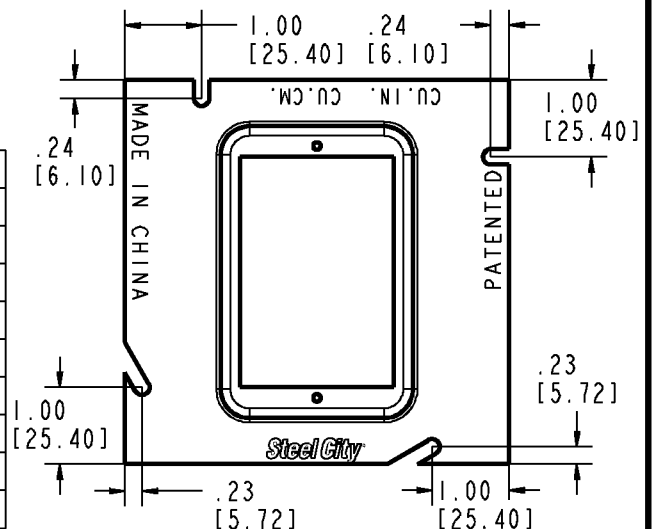




# Steel City



- NOTES:  
 1. METAL MINIMUM THICKNESS .063".  
 2. ZINC PLATED



* FLAT	VOLUME	CATALOG NO
1/4	1.5 IN <sup>3</sup> [25 CM <sup>3</sup> ]	82C-1G-0
1/2	3.5 IN <sup>3</sup> [57 CM <sup>3</sup> ]	82C-1G-1/2
5/8	4.3 IN <sup>3</sup> [71 CM <sup>3</sup> ]	82C-1G-5/8
3/4	5.3 IN <sup>3</sup> [87 CM <sup>3</sup> ]	82C-1G-3/4
1	6.8 IN <sup>3</sup> [112 CM <sup>3</sup> ]	82C-1G-1
1-1/4	8.5 IN <sup>3</sup> [140 CM <sup>3</sup> ]	82C-1G-1-1/4
1-1/2	10.5 IN <sup>3</sup> [172 CM <sup>3</sup> ]	82C-1G-1-1/2
2	14 IN <sup>3</sup> [230 CM <sup>3</sup> ]	82C-1G-2

**GENERAL NOTES**

- ALL DIMENSIONS ARE FOR REFERENCE ONLY.
- DIMENSIONS IN BRACKETS [ ] ARE IN METRIC UNITS.

**REVISIONS**

SEE ERN (\*\*\*\*) FOR APPROVAL SIGNATURES & RELEASE DATE.  
 PROJECT NO: \*\*\*\*

DESCRIPTION:

**5" SQUARE X SINGLE GANG EXTENSION RING**

**Thomas & Betts**  
 A Member of the ABB Group

ORIGINAL PROJECT NO / ( ERN NO )

00P000414 / (2014664)

SHEET NO:

1 OF 1

REV. NO:

-

DRAWING NO:

**WSD-001190**